

ISOTEST®

High Voltage Holiday Detectors & Accessories for Coatings, Linings and Wrappings.



The shipment is executed according to our terms of delivery.

Revisions in the course of technical progress reserved.

ELMED Dr. Ing. Mense GmbH • Weilenburgstr. 39 • 42579 Heiligenhaus
Phone: +49 (0) 2056 / 9329-0 • Fax: +49 (0) 2056 / 9329-33
E-mail: isotest@elmedgmbh.com

www.elmedgmbh.com

Index

	Page
■ ISOTEST® Testing devices	3
■ ISOTEST® Industry solutions	5
■ Accessories for grounding	8
- Grounding collars & grounding foil	7
- Grounding rods	8
- Trailing ground	9
- Grounding cable assemblies	9
- Grounding brush electrodes	10
■ Testing electrodes	11
- Flat brush electrodes	11
- Wire rake & paint brush electrodes	14
- Pipeline coils / Spring electrodes	15
- Semicircular electrodes	16
- Brush electrodes for internally coated pipes	17
■ Insulated extension bars	17
■ Batteries & chargers	18
■ Transport box	19
■ Maintenance & Calibration	19



Your confidence in the ORIGINAL

For decades the ISOTEST® quality standard has been continuously refined by the ELMED engineering team.

No matter which application conditions you are facing you can experience the convincing results in kind of reliability of the test and safety for the operator.

With the original ISOTEST® accessories you will fulfil the high requirements defined for industrial use and construction sites.

Original ISOTEST® accessories: Just look for the ISOTEST® logo to be sure!

ISOTEST® Testing devices

ISOTEST® inspect pro

Part-No.: 0113510060



ISOTEST® inspect pro (Set)

Test voltage adjustable 1 – 35 kV
in steps of 0.05 kV (up to 10 kV) / 0.1 kV (from 10 kV)

Scope of supply:

Test device, comfortable device bag with carrying strap and viewing window,
lithium-ion battery 14.4 V / 3450 mAh, charger 100 – 240 VAC,
grounding cable 10 m with clamp and plug,
robust transport box, testing electrode of your choice of up to 500 mm,
calibration certificate



Part-No.: 0113510061

ISOTEST® inspect pro (basic version)

Scope of supply:

Test device, lithium-ion battery 14.4 V / 3450 mAh, charger 100 – 240 VAC,
grounding cable 10 m with clamp and plug, calibration certificate

ISOTEST® inspect 35 / 8.0

Part-No.: 0113510001



ISOTEST® inspect 35 (set)

Test voltage adjustable from 5 – 35 kV in 0.1 kV steps

Scope of supply:

Test device, comfortable device bag with carrying strap,
battery 6 V / 4.5 Ah (SLA), charger 230 VAC,
grounding cable 10 m with clamp and plug,
robust transport box, testing electrode of your choice of up to 500 mm

Part-No.: 0118100011



ISOTEST® inspect 8.0 (set)

Test voltage adjustable from 0.5 – 8.0 kV in 0.5 kV steps

Scope of supply:

Test device, comfortable device bag with carrying strap,
battery 6 V / 4.5 Ah (SLA), charger 230 VAC,
grounding cable 10 m with clamp and plug,
grounding cable 15 m with clamps on both ends,
robust transport box, testing electrode of your choice of up to 500 mm

ISOTEST® 4S / 4S plus

Part-No.: 0141000010



ISOTEST® 4S

Test voltage adjustable from 10 – 25 kV in 5 kV steps

Scope of supply:

Test device, leather bag with carrying strap, battery 6 V / 4.5 Ah (SLA), charger 230 VAC, grounding cable 10 m with clamp and plug

Part-No.: 0141000001

Optionally available with safety shut-off function

Part-No.: 0141002010



ISOTEST® 4S plus

Test voltage 5 – 35 kV in 7 voltage steps of your choice
(Standard: 5 / 10 / 15 / 20 / 25 / 30 / 35 kV)

Scope of supply:

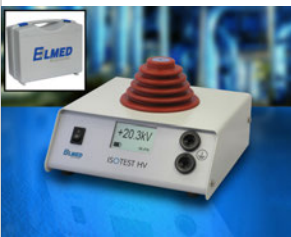
Test device, leather bag with carrying strap, battery 6 V / 4.5 Ah (SLA), charger 230 VAC, grounding cable 10 m with clamp and plug

Part-No.: 0141002001

Optionally available with safety shut-off function

ISOTEST® HV pro

Part-No.: 0190000141



Pulse voltmeter ISOTEST® HV pro

for measuring the pulse voltage of portable ISOTEST® holiday detectors
ISOTEST® inspect pro, ISOTEST® inspect 8.0/35 and ISOTEST® 4S/4S plus

Measuring range: 2.5 - 35.0 kV

Resolution: 0.01 kV (2.50 - 9.99 kV) / 0.1 kV (10.0 - 35.0 kV)

Scope of supply:

Measuring instrument, battery set, measuring accessories, transport box, calibration certificate

ISOTEST® Industry solutions

The following industry solutions represent proven test standards in the respective segment and thus simplify the selection of the appropriate device and accessories for your application:

Part-No.: 0141000030



© Open Grid Europe GmbH

ISOTEST® Test kit: Pipeline incl. ISOTEST® 4S plus

Test kit consisting of:

ISOTEST® 4S plus, test voltage 5 – 35 kV in 7 voltage steps of your choice, leather bag with carrying strap, battery 6 V / 4.5 Ah (SLA), charger 230 VAC, spare battery for safety button and fuse for rechargeable battery, grounding cable 10 m with clamp and plug, grounding stick including 5 m cable and clamp, trailing ground 6 m, grounding collar type 1 for NPS 100 – 200, flat brush electrode with angle adjustment (length 250 mm, brass), SlimLine spring electrode of your choice up to NPS 20", SlimLine connector for testing with spring electrodes, robust transport box

Part-No.: 0113510070

ISOTEST® Test kit: Pipeline incl. ISOTEST® inspect pro

Part-No.: 0113510035

ISOTEST® Test kit: Pipeline incl. ISOTEST® inspect 35

Part-No.: 0113510021



© R.W. Inspection Services Pty. Ltd

ISOTEST® Test kit: Rubber lining incl. ISOTEST® inspect pro

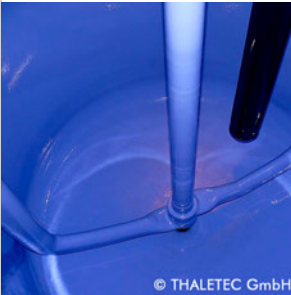
Test kit consisting of:

ISOTEST® inspect pro, test voltage adjustable 1 – 35 kV in steps of 0.05 kV (up to 10 kV) / 0.1 kV (from 10 kV), comfortable device bag with carrying strap and viewing window, lithium-ion battery 14.4 V / 3450 mAh, charger 100 – 240 VAC, wire rake electrode (trim length 200 mm, stainless steel), grounding cable 10 m with clamp and plug, grounding cable 15 m with two clamps, extension bar 500 mm with electrode chuck, extension bar 500 mm without electrode chuck, flat brush electrode with angle adjustment (length 400 mm, brass), robust transport box

Part-No.: 0113510020

ISOTEST® Test kit: Rubber lining incl. ISOTEST® inspect 35

Part-No.: 0118100021



© THALETEC GmbH

ISOTEST® Test kit: Glass lining incl. ISOTEST® inspect pro

Test kit consisting of:

ISOTEST® inspect pro, test voltage adjustable 1 – 35 kV in steps of 0.05 kV (up to 10 kV) / 0.1 kV (from 10 kV), comfortable device bag with carrying strap and viewing window, lithium-ion battery 14.4 V / 3450 mAh, charger 100 – 240 VAC, wire rake electrode (trim length 100 mm, stainless steel), wire rake electrode (trim length 200 mm, stainless steel), grounding cable 10 m with clamp and plug, grounding cable 15 m with two clamps, grounding foil (set), extension bar 500 mm with electrode chuck, extension bar 500 mm without electrode chuck, robust transport box

Part-No.: 0118100020

ISOTEST® Test kit: Glass lining incl. ISOTEST® inspect 8.0

Part-No.: 0118100022

ISOTEST® Test kit: Glass lining incl. ISOTEST® inspect 35

Part-No.: 0113510011



ISOTEST® Test kit: Vessel & Tank incl. ISOTEST® inspect pro

Test kit consisting of:

ISOTEST® inspect pro, test voltage adjustable 1 – 35 kV in steps of 0.05 kV (up to 10 kV) / 0.1 kV (from 10 kV), comfortable device bag with carrying strap and viewing window, lithium-ion battery 14.4 V / 3450 mAh, charger 100 – 240 VAC, wire rake electrode (trim length 200 mm, stainless steel), grounding cable 10 m with clamp and plug, grounding cable 15 m with two clamps, grounding stick including 5 m cable and clamp, flat brush electrode with angle adjustment (length 300 mm, brass), extension bar 500 mm with electrode chuck, robust transport box

Part-No.: 0113510010

ISOTEST® Test kit: Vessel & Tank incl. ISOTEST® inspect 35

Part-No.: 0113510031



ISOTEST® Test kit: Waterproofing incl. ISOTEST® inspect pro

Test kit consisting of:

ISOTEST® inspect pro, test voltage adjustable 1 – 35 kV in steps of 0.05 kV (up to 10 kV) / 0.1 kV (from 10 kV), comfortable device bag with carrying strap and viewing window, lithium-ion battery 14.4 V / 3450 mAh, charger 100 – 240 VAC, wire rake electrode (trim length 200 mm, stainless steel), grounding cable 10 m with clamp and plug, grounding cable 15 m with two clamps, flat brush electrode with angle adjustment (length 400 mm, brass), extension bar 500 mm with electrode chuck, extension bar 500 mm without electrode chuck, robust transport box

Part-No.: 0113510030

ISOTEST® Test kit: Waterproofing incl. ISOTEST® inspect 35

Part-No.: 0113510041



ISOTEST® Test kit: Valves & Fittings incl. ISOTEST® inspect pro

Test kit consisting of:

ISOTEST® inspect pro, test voltage adjustable 1 – 35 kV in steps of 0.05 kV (up to 10 kV) / 0.1 kV (from 10 kV), comfortable device bag with carrying strap and viewing window, lithium-ion battery 14.4 V / 3450 mAh, charger 100 – 240 VAC, wire rake electrode (trim length 200 mm, stainless steel), ground cable 10 m with clip and instrument plug, ground cable 15 m with two clamping jaws, flat electrode of conductive rubber (length 50 mm), robust transport box

Part-No.: 0113510040

ISOTEST® Test kit: Valves & Fittings incl. ISOTEST® inspect 35

Accessories for grounding

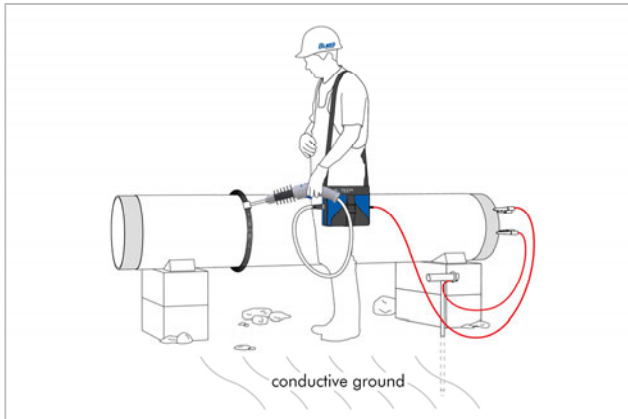
Proper grounding of the high voltage testing instrument is an absolutely essential precondition for all high voltage tests. The power circuit is closed through the grounding, i.e., the test instrument is first connected to the not-insulated, conductive section of the test object, then the test object is connected to the ground potential.

While testing with high voltage instruments, it is of utmost importance to always establish a connection with the ground potential by means of suitable accessories.

ISOTEST® instruments allow 3 different grounding forms:

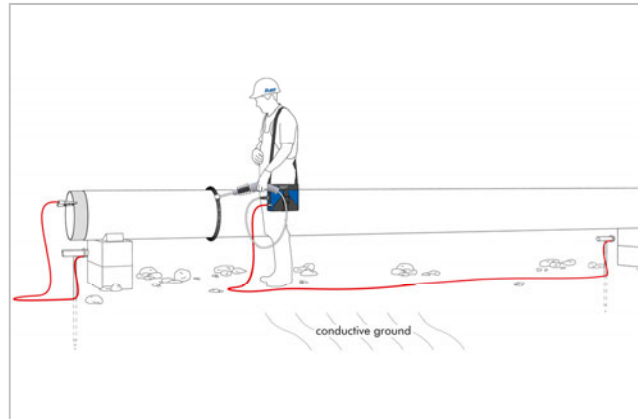
(Example: Grounding of a pipe with parent coating or field joint coating)

Direct Grounding



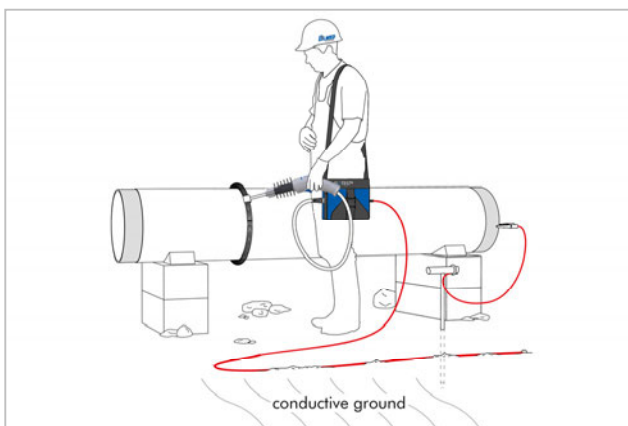
Direct grounding with the standard grounding cable 10 m

The direct, conductive connection between the testing instrument and the non-insulated pipe end to be tested is the most reliable form of grounding, and is to be preferred to all other options. The pipe to be tested must also be grounded for any high voltage test, e.g. with a grounding stick and a 2 m grounding cable.



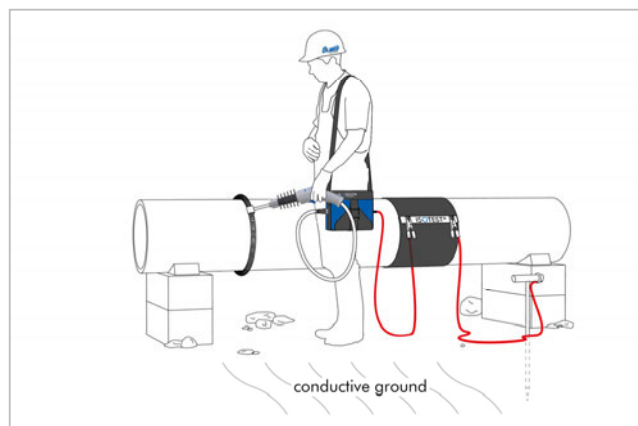
The additional **grounding stick incl. 15 m grounding cable** allows the **direct grounding** of the testing device, when the bare pipe end cannot be connected using the standard grounding cable.

Indirect grounding



Indirect grounding by means of the trailing ground enables pipeline testing without obstructing cables, if direct grounding is not possible.

Capacitive grounding



The grounding collar or a special grounding film is used if a conductive connection with the object to be tested is not possible. The grounding collar is also recommended in case of bad-conducting or extremely dry soil. The grounding collar consists of a special, carbon infused rubber. This represents a form of **capacitive grounding** which can only be implemented while using pulse voltage.

Wound around the pipe to be tested in the fitting size and tightened, one side of the collar is connected to the soil (grounding cable with grounding rod), the other side is connected to the testing instrument.

Grounding collars & grounding foil



Grounding collar of special conductive rubber for capacitive grounding

For the grounding of fully coated, buried pipes in which direct galvanic grounding is not possible.

The use of a grounding collar is also recommended in case of bad-conducting or extremely dry soil. Wound around the pipe to be tested in the fitting size and tightened, one side of the collar is connected to the soil (grounding cable with grounding rod), the other side is connected to the testing instrument.

	NPS mm	NPS inch
Part-No.: 0174401020	type 1 for NPS 100 – 200	4 – 8
Part-No.: 0174402040	type 2 for NPS 200 – 400	8 – 16
Part-No.: 0174403060	type 3 for NPS 300 – 600	12 – 24
Part-No.: 0174450100	type 4 for NPS 500 – 1000	20 – 40
Part-No.: 0174410140	type 5 for NPS 1000 – 1400	40 – 56

Part-No.: 0174500010

Grounding foil (set) for capacitive grounding

consisting of 20 pcs. self-adhesive special copper foil 200 x 150 mm,
1 roll fixing tape 15 m

Grounding rods

Part-No.: 0174200000

Grounding rod incl. 2 m cable with clamp (clamping range up to 20 mm)



Part-No.: 0174200005

Grounding rod incl. 5 m cable with clamp

Part-No.: 0174200001

Grounding rod incl. 10 m cable with C-Clamp



Part-No.: 0174600034

Grounding rod incl. 15 m cable with plug suitable for ISOTEST® inspect pro



Part-No.: 0174200004

suitable for ISOTEST® 3P / 4S / 4Splus / inspect 4.0/8.0/35

Trailing ground



Trailing ground with plug

The use of a trailing ground allows pipeline testing without obstructing cables, if direct grounding is not possible.

An important precondition is a sufficiently conductive ground that ensures a good, large-surface contact with the trailing ground.

	suitable for	Length
Part-No.: 0174600020	ISOTEST® inspect pro	6 m
Part-No.: 0174600025	ISOTEST® inspect pro	9 m
Part-No.: 0174120000	ISOTEST® 3P / 4S / 4Splus / inspect 4.0/8.0/35	6 m
Part-No.: 0174120001	ISOTEST® 3P / 4S / 4Splus / inspect 4.0/8.0/35	9 m

Grounding cable assemblies



Grounding cable with clamp and plug

	suitable for	Length
Part-No.: 0174600000	ISOTEST® inspect pro	10 m
Part-No.: 0174600001	ISOTEST® inspect pro	15 m
Part-No.: 0174200002	ISOTEST® 3P / 4S / 4Splus / inspect 4.0/8.0/35	10 m
Part-No.: 0174320000	ISOTEST® 3P / 4S / 4Splus / inspect 4.0/8.0/35	15 m

Part-No.: 0174200100

Grounding cable 15 m with clamps at both ends



Part-No.: 0174600010

Grounding Cable Y-type suitable for ISOTEST® inspect pro
for simultaneously grounding of test object and ISOTEST® device

End connection: clamp – clamp / plug
Length: 10 m – 2 m / 2 m

Part-No.: 0174250010

suitable for ISOTEST® 3P / 4S / 4Splus / inspect 4.0/8.0/35

Part-No.: 0174600012

Grounding Cable Y-type suitable for ISOTEST® inspect pro
for simultaneously grounding of grounding brush electrode and ISOTEST® device

End connection: clamp – plug / plug
Length: 10 m – 2 m / 2 m

Part-No.: 0174250020

suitable for ISOTEST® 3P / 4S / 4Splus / inspect 4.0/8.0/35

Grounding brush electrodes



Grounding brush electrodes (for grounding only)

for direct grounding and also for capacitive grounding of fully coated valves, fittings and pipes where direct grounding is not possible.

Design: stainless steel trimming

Caution: Inappropriate for using as testing electrode! (s. page 17)

	NPS mm	NPS inch
Part-No.: 0165400025	NPS 25	1
Part-No.: 0165400032	NPS 32	1 ¼
Part-No.: 0165400040	NPS 40	1 ½
Part-No.: 0165400050	NPS 50	2
Part-No.: 0165400065	NPS 65	2 ½
Part-No.: 0165400080	NPS 80	3
Part-No.: 0165400100	NPS 100	4
Part-No.: 0165400125	NPS 125	5
Part-No.: 0165400150	NPS 150	6
Part-No.: 0165400175	NPS 175	7
Part-No.: 0165400200	NPS 200	8
Part-No.: 0165400250	NPS 250	10

Testing electrodes

The right choice of the testing electrode depends primarily on the size or diameter of the test object. All testing electrodes are available in different length/width or for different diameter.

Gaps that might occur due to heavily soiled or bent bristles when using testing electrodes might jeopardise the whole test. The same applies for spring electrodes that are not precisely adjusted to the pipe diameter.

Choice of Testing Electrodes

In order to provide for a safe and trouble-free testing it is compulsory to consider all testing conditions and procedures before choosing the necessary accessories and the right size and type of the testing electrodes. The user is responsible for the application-related choice of accessories and electrode size, for their proper use as well as their related regular maintenance of all components.

Flat brush electrodes



Flat brass brush electrodes with angle adjustment

Fit for all-purpose application, e.g. for the inspection of recoatings, tanks, containers and large surfaces.

Type: High quality full brass brushes, trim length: 40 mm, incl. angle adjustment, adjustable up to 90°

	Length mm
Part-No.: 0167100050	50
Part-No.: 0167100100	100
Part-No.: 0167100150	150
Part-No.: 0167100200	200
Part-No.: 0167100250	250
Part-No.: 0167100300	300
Part-No.: 0167100350	350
Part-No.: 0167100400	400
Part-No.: 0167100450	450
Part-No.: 0167100500	500
Part-No.: 0167100550	550
Part-No.: 0167100600	600
Part-No.: 0167100700	700
Part-No.: 0167100800	800
Part-No.: 0167100900	900
Part-No.: 0167101000	1000

Longer trim on request



Flat brass brush electrodes

Fit for all-purpose application, e.g. for the inspection of recoatings, tanks, containers and large surfaces.

Type: High quality full brass brushes, trim length: 40 mm

	Length mm
Part-No.: 0162100050	50
Part-No.: 0162100100	100
Part-No.: 0162100150	150
Part-No.: 0162100200	200
Part-No.: 0162100250	250
Part-No.: 0162100300	300
Part-No.: 0162100350	350
Part-No.: 0162100400	400
Part-No.: 0162100450	450
Part-No.: 0162100500	500
Part-No.: 0162100550	550
Part-No.: 0162100600	600
Part-No.: 0162100700	700
Part-No.: 0162100800	800
Part-No.: 0162100900	900
Part-No.: 0162101000	1000

Longer trimming on request



Flat brush electrodes of stainless steel with angle adjustment

Fit for all-purpose application, e.g. for the inspection of recoatings, tanks, containers and large surfaces.

Type: High quality stainless steel brushes, trim length: 40 mm, incl. angle adjustment, adjustable up to 90°

	Length mm
Part-No.: 0162600200	200
Part-No.: 0162600300	300
Part-No.: 0162600400	400



Flat brush electrodes of stainless steel

Fit for all-purpose application, e.g. for the inspection of recoatings, tanks, containers and large surfaces.

Type: High quality stainless steel brushes, trim length: 40 mm

	Length mm
Part-No.: 0162500200	200
Part-No.: 0162500300	300
Part-No.: 0162500400	400



Flat electrodes of conductive rubber with angle adjustment

Flat electrodes made of special conductive rubber are particularly designed for testing objects with delicate or thin surfaces.

incl. angle adjustment, adjustable up to 90°

	Length mm
Part-No.: 0167200050	50
Part-No.: 0167200100	100
Part-No.: 0167200150	150
Part-No.: 0167200200	200
Part-No.: 0167200250	250
Part-No.: 0167200300	300
Part-No.: 0167200350	350
Part-No.: 0167200400	400
Part-No.: 0167200450	450
Part-No.: 0167200500	500
Part-No.: 0167200550	550
Part-No.: 0167200600	600



Flat electrodes of conductive rubber

Flat electrodes made of special conductive rubber are particularly designed for testing objects with delicate or thin surfaces.

	Length mm
Part-No.: 0162200050	50
Part-No.: 0162200100	100
Part-No.: 0162200150	150
Part-No.: 0162200200	200
Part-No.: 0162200250	250
Part-No.: 0162200300	300
Part-No.: 0162200350	350
Part-No.: 0162200400	400
Part-No.: 0162200450	450
Part-No.: 0162200500	500
Part-No.: 0162200550	550
Part-No.: 0162200600	600

Part-No.: 0166000005



Angle adjustment for flat brush electrodes

Type: Stainless steel, adjustable up to 90°



SoftLine flat Electrodes of stainless steel fibres (on request)

SoftLine flat electrodes made of stainless steel fibres are particularly suited for testing delicate surfaces, e.g. foils

Wire rake & paint brush electrodes



Wire rake electrodes

Wire rake electrodes are suitable for almost every application, e.g. for testing of tanks, containers and fittings.

Type: High quality stainless steel trim

Incl. transport sleeve for safe storage and protection of the testing electrode against deformation and damage.

Trim length mm

Part-No.: 0168100000	100
Part-No.: 0168200000	200



Paint brush electrodes

Paint brush electrodes are designed for surfaces with difficult access.

Type: High quality stainless steel fibres

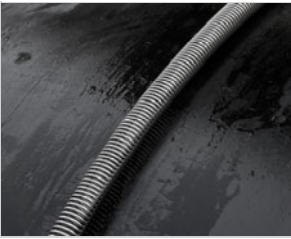
Incl. transport sleeve for safe storage and protection of the testing electrode against deformation and damage.

Trim length mm

Part-No.: 0166015100	100
Part-No.: 0166015200	200

Pipeline coils / Spring electrodes

The easiest and fastest way to check even longer pipe sections. Before burying the pipe the complete pipe surface can be checked in a single work process using spring electrodes. ISOTEST® spring electrodes have excellent rolling characteristics and therefore guarantee accurate and reliable test results.



SlimLine spring electrodes, corrosion resistant stainless steel design

The SlimLine spring electrodes reduce the electric load of the ISOTEST® testing device. Thus, stable test voltages are guaranteed even for damp surfaces and pipes. The excellent rolling characteristics allow a comfortable and reliable test of the entire pipe coating in one single work process. SlimLine spring electrodes are available for all sizes from 2" (NPS 50 mm) up to 64" (NPS 1600 mm).

Type: High quality stainless steel electrodes, Ø 21 mm

	NPS mm	NPS inch
Part-No.: 0161200050	50	2
Part-No.: 0161200080	80	3
Part-No.: 0161200100	100	4
Part-No.: 0161200125	125	5
Part-No.: 0161200150	150	6
Part-No.: 0161200200	200	8
Part-No.: 0161200250	250	10
Part-No.: 0161200300	300	12
Part-No.: 0161200350	350	14
Part-No.: 0161200400	400	16
Part-No.: 0161200450	450	18
Part-No.: 0161200500	500	20
Part-No.: 0161200550	550	22
Part-No.: 0161200600	600	24
Part-No.: 0161200650	650	26
Part-No.: 0161200700	700	28
Part-No.: 0161200750	750	30
Part-No.: 0161200800	800	32
Part-No.: 0161200850	850	34
Part-No.: 0161200900	900	36
Part-No.: 0161200950	950	38
Part-No.: 0161201000	1000	40
Part-No.: 0161201050	1050	42
Part-No.: 0161201100	1100	44
Part-No.: 0161201150	1150	46
Part-No.: 0161201200	1200	48
Part-No.: 0161201300	1300	52
Part-No.: 0161201400	1400	56
Part-No.: 0161201500	1500	60
Part-No.: 0161201600	1600	64

Part-No.: 0176000100



Connector for SlimLine spring electrodes

You always need a matching SlimLine connector when testing with SlimLine spring electrodes.

Semicircular electrodes



Semicircular electrodes

In case the pipe is already lowered into the trench, the semicircular electrodes are the appropriate solution for the holiday detection test.

Type: High quality full brass brushes, trim length: 30 mm,

	NPS mm	NPS inch
Part-No.: 0163000050	50	2
Part-No.: 0163000075	75	3
Part-No.: 0163000080	80	3
Part-No.: 0163000100	100	4
Part-No.: 0163000125	125	5
Part-No.: 0163000150	150	6
Part-No.: 0163000200	200	8
Part-No.: 0163000250	250	10
Part-No.: 0163000300	300	12
Part-No.: 0163000350	350	14
Part-No.: 0163000400	400	16
Part-No.: 0163000500	500	20
Part-No.: 0163000600	600	24
Part-No.: 0163000700	700	28
Part-No.: 0163000800	800	32
Part-No.: 0163000900	900	36
Part-No.: 0163001000	1000	40

Special sizes on request

Part-No.: 0181000000



Insulating Handle

An additional insulating handle is needed when working with semicircular electrodes for pipes larger than DN 500 / NPS 20 inch.

Brush electrodes for internally coated pipes



Brush electrodes for internally coated pipes

The brush electrodes are drawn through the pipe during the holiday test using a high voltage extension cable or an insulated extension bar.

High voltage extension cables are available in 4 m and 7 m lengths.

Extension bars are available in 0.5 m and 1 m lengths.

Design:

brush electrode with two sections of stainless steel and a nylon-reinforced trimming in the middle section.

	NPS mm	NPS inch
Part-No.: 0165300025	25	1
Part-No.: 0165300032	32	1 ¼
Part-No.: 0165300040	40	1 ½
Part-No.: 0165300050	50	2
Part-No.: 0165300065	65	2 ½
Part-No.: 0165300080	80	3
Part-No.: 0165300100	100	4
Part-No.: 0165300125	125	5
Part-No.: 0165300150	150	6
Part-No.: 0165300175	175	7
Part-No.: 0165300200	200	8
Part-No.: 0165300250	250	10



Extension Cable for High Voltage Testing of Internally Coated Pipes

Brush electrodes are drawn through the pipe during the holiday test using a high voltage extension cable.

	Length
Part-No.: 0176000004	4 m
Part-No.: 0176000007	7 m

Special lengths on request

Insulated extension bars



Insulated extension bars

To extend the probe for applications where a long reach is required.

Extension bars can be combined up to 3 m.

You always need one section with electrode chuck.

Part-No.: 0177500000	Extension Bar 500 mm with electrode chuck
Part-No.: 0177600000	Extension Bar 1000 mm with electrode chuck
Part-No.: 0177100000	Extension Bar 500 mm without electrode chuck
Part-No.: 0177200000	Extension Bar 1000 mm without electrode chuck

Batteries & chargers

Part-No.: 0176100001

Lithium-ion battery 14.4 V / 3450 mAh for ISOTEST® inspect pro



Part-No.: 0172110000

Charger for Lithium-ion battery 14.4 V / 3450 mAh

Wide-range input: 100 – 240 V / 50 – 60 Hz



Part-No.: 0176110451

**Battery 6 V / 4.5 Ah (SLA)
for ISOTEST® II T / II RT / 3P / 4S / 4Splus / inspect 4.0/8.0/35**



Part-No.: 0176200700

SMD fuses for batteries 6 V / 4.5 Ah (SLA)
5 pcs – **Attention: Check battery for correct fuse type**



Part-No.: 0176200710

SMD fuses (5 pcs) + Battery for ISOTEST® handle (set)

Part-No.: 0176200703

Blade fuses for batteries 6 V / 4.5 Ah (SLA)
5 pcs – **Attention: Check battery for correct fuse type**



Part-No.: 0176200711

Blade fuses (5 pcs) + Battery for ISOTEST® handle (set)

Part-No.: 0176200702

Battery for ISOTEST® handle

Part-No.: 0172102019

Charger for batteries 6 V / 4.5 Ah (SLA)

Supply voltage: 230 VAC / 50 Hz



Transport box

Part-No.: 0177200002



Robust transport box ISOTEST®

Dimensions: 667 x 350 x 340 mm (W x H x D)

Maintenance & Calibration

Part-No.: 0920500010



Maintenance holiday detector ISOTEST® inspect pro incl. calibration cert.

The maintenance includes a basic cleaning and a comprehensive inspection:

Inspection of the device conditions

- device components, housing, handle, insulator and high-voltage cable
- touch display and control elements

Inspection of the device functions

- high-voltage generation and output voltage using PTB* traceable calibrated measuring equipment
- electronic assemblies
- intelligent high-voltage and load control
- pulse repetition frequencies
- current consumption without load
- adjustable detection sensitivity (filter)
- optical and acoustic fault indication and indication in the handle
- overload indication
- charge level indicator and deep discharge protection function
- automatic monitoring of the grounding plug
- safety button incl. emergency stop function
- USB interface
- software updates

Inspection of external components

- power pack – capacity measurement and mechanical inspection
- supplied accessories (testing electrodes, grounding accessories, etc.)

* Physikalisch-Technische Bundesanstalt – the national metrology institute of Germany

In the case of failures or damages, a failure analysis will be carried out and a cost estimate will be issued for the necessary repairs and adjustments of relevant settings.

With annual maintenance and calibration, your warranty claim will be extended each time for further 12 months - for up to 10 years!*

* The ISOTEST® quality guarantee is valid for devices up to an age of 10 years. Excluded are wearing parts or damages caused by the customer's own fault.

To reduce long turnaround times and the waiting/downtime of your devices, please always make a service appointment before you send the equipment to us - by phone or by e-mail.

Part-No.: 0920500001

Maintenance holiday detector ISOTEST® 4S / 4Splus / inspect 4.0/8.0/35 excl. calibration certificate

Part-No.: 0920500004

Maintenance holiday detector ISOTEST® II T / II RT / 3P excl. calibration certificate

Part-No.: 0940001001

Calibration certificate for ISOTEST® 4S / 4Splus / inspect 4.0/8.0/35 / II T / II RT / 3P