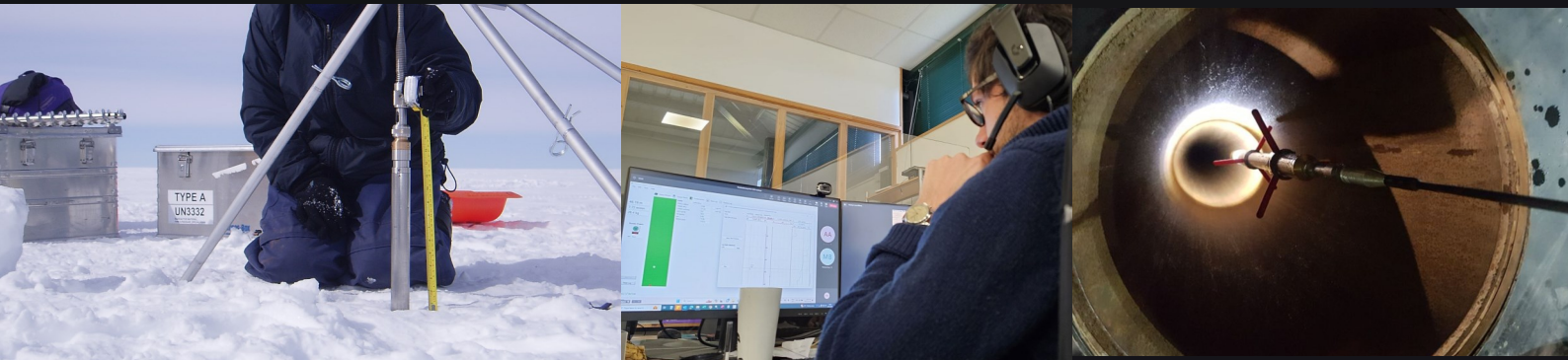


BOREHOLE LOGGING SYSTEMS

UNMATCHED CONFIDENCE IN EVERY PROBE

Geovista equipment is designed to be rugged, with a focus on reliability. We pride ourselves on making our tools as resilient as possible to everyday use in harsh environments. Our tools are in use worldwide in all environments, from the poles to the equator.

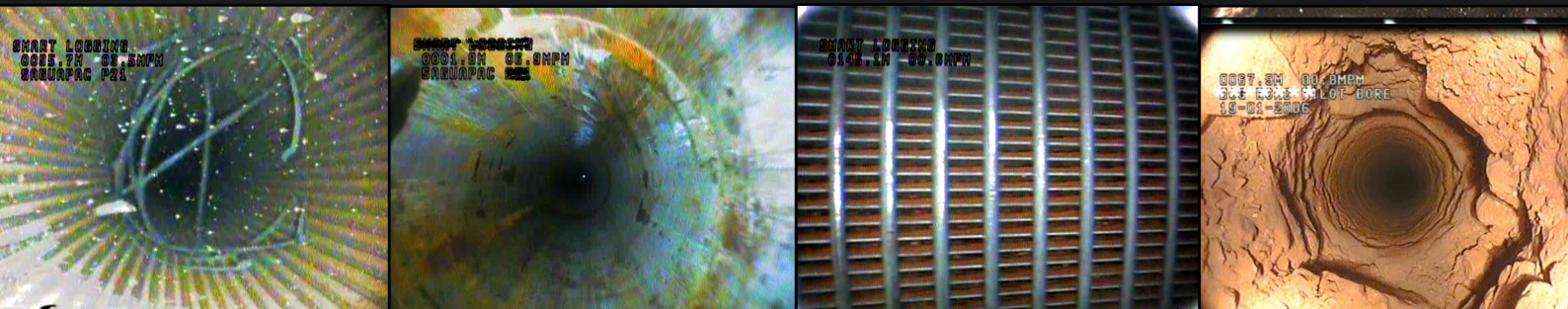


YOUR TRUSTED EXPLORATION COMPANION

At Geovista we offer a 2-year manufacturer's warranty on all of our equipment. We pride ourselves on offering lifetime support for our tools, meaning you'll never be left alone without the support you need. We aim to respond to all support requests within 48 hours and have offices in the UK, USA, and EU ready to support our customers.

REDEFINING SUBSURFACE EXPLORATION

At Geovista, we have a history of innovating. Since pioneering stackable logging tools, we have developed a range of high-quality sondes and equipment for specific applications. We offer specialised tools for different sectors, such as our digital P&S probe.





CHOICE ENHANCED

With over **30 different probes available**, as well as **high-pressure** and **high-temperature** variants, we're confident that we have the right tools for your job. Our range of winches covers everything from small, 12V DC portable units to large, robust machines with the capacity for up to 3000 m of 3/16" cable.



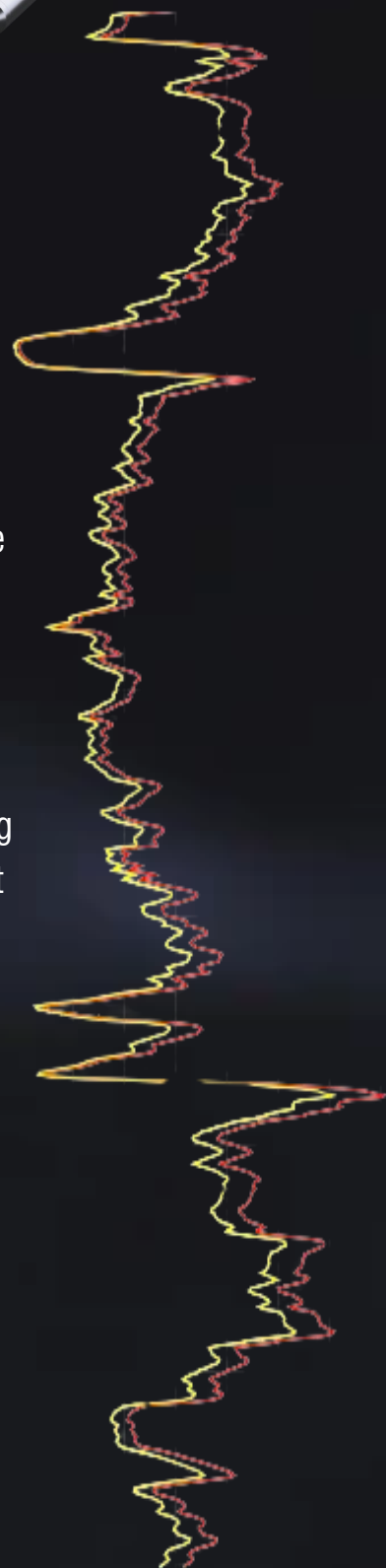
TOMORROW'S TECHNOLOGY, TODAY

Geovista offer **memory tools** that can be deployed without the need for a wireline conveyance system. Using our Android app, a logging sequence can be programmed and run with the data downloaded once complete. This system uses a memory module and a battery module connected to standard wireline logging probes. This means there is no need to upgrade or change your wireline tools for memory logging.

Our **bespoke Thru-Bit systems** are designed to interface with your drilling rig. The tool string is run in memory mode and conveyed through the bit into the open hole. Logging is performed as the pipe is tripped out.

FUTURE-PROOF YOUR DATA

Geovista's state-of-the-art equipment provides unmatched data quality, enabling critical insights for informed decision making.



OUR SONDES

Borehole Surveying

- *Verticality*
- *North Seeking Gyro*
- *Inclinometer*
- *Caliper (2-arm, 3-arm, 4-arm)*
- *Magnetometer*
- *Casing Collar Locator*

Natural Radioactivity

- *Natural Gamma (NaI, Geiger Müller)*
- *Grade Gamma*
- *Spectral Gamma*

Downhole Seismic Tools

- *Downhole Geophone*
- *Downhole P&S velocity sonde*

Borehole Imaging and Video

- *Axial and Dual Cameras*
- *Borehole Televiewers*

Nuclear

- *Neutron-Neutron and Dual Neutron porosity*

Sonic

- *60mm Sonic (1Tx, 2Rx)*
- *50mm Array Sonic (1Tx, 4Rx)*

Thru-Bit Logging Systems

Water quality and hydrogeological

- *Nitrate probe*
- *Impeller Flowmeter*
- *Heat Pulse Flowmeter*
- *Water Quality (Idronaut 310)*
- *Water level indicator*
- *Fluid Temperature/Conductivity*
- *Temperature*
- *Addressable Water Sampler*
- *Quartz Pressure Gauge*
- *pH*

Density

- *Formation Density Sonde*
- *Trisonde*

Resistivity/Conductivity/Susceptibility

- *Normal Resistivity (SP, SPR, 16", 64")*
- *Dual Focused Resistivity*
- *Dual Induction*
- *Induced Polarisation*
- *Magnetic Susceptibility*

Ultra slim

- *16 mm Verticality*
- *16 mm Temperature*



Geovista International

Unit 10
Cae Ffwt Business Park
Glan Conwy
Conwy
LL28 5SP
UK
Email: geovista@geovista.co.uk
Tel: +44 1492 57 33 99

Geovista USA

1950
S Houston Ave
Humble
Houston
Texas 773396
USA
Email: contact@geovista.us
Tel: +1 (281) 827-7546

Geovista EU

H-7675
Bakonya
Hrsz: 083
Pecs
Hungary
Email: geovista@geovista.co.uk
Tel: +44 1492 57 33 99