

RESCUE RADAR™

Find buried survivors in minutes



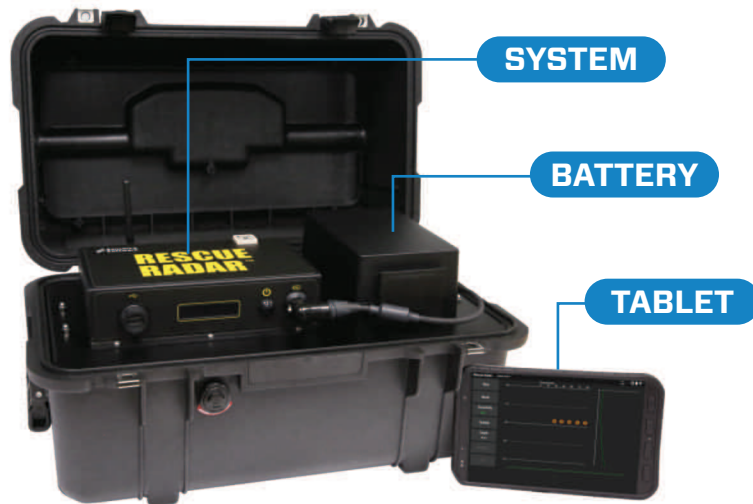
RESCUE RADAR™

Rescue Radar™ is designed for rapid deployment by Search & Rescue teams all around the world to quickly find survivors trapped beneath the surface.

Determining the presence of life is of utmost importance following a disaster and Search & Rescue teams need to rapidly assess where to focus their resources in the initial hours following the catastrophe.

By making use of our patented ultra-wide bandwidth (UWB) antenna technology Rescue Radar™ is able to detect moving and immobile victims below the surface.

Rescue Radar™ comes standard with a tablet, system, battery and charger.



With minimal operator training, Rescue Radar™ can:



Locate unconscious and conscious victims

Our third generation Rescue Radar™ system is highly sensitive to detect slight motion and shallow breathing.



Effectively operate in high noise and wind environments

GPR is a reliable tool when operating in difficult environments.



Seamlessly complement the use of canine and seismic rescue systems

Augments search capabilities with a reliable and proven method that detects motion, such as breathing, within seconds.



**Find
Survivors
Trapped
Beneath
the Surface**

RESCUE MODES

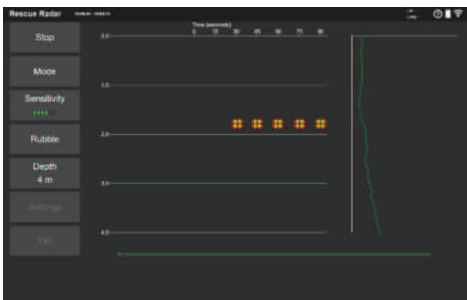
BASIC MODE



Locate victims Save lives

Easily toggle between two modes for optimal operation in all circumstances.

TIME LAPSE MODE



BASIC MODE

Allow first responders with minimal or no prior training with Rescue Radar™ to locate trapped victims. The interface shows a life status symbol on a scale to indicate the distance from Rescue Radar™ to the victim.

TIME LAPSE MODE

Allows the operators to locate movement and monitor an area over a period of time to reduce false alarms. A consistent life status symbol over a number of cycles (time lapses) builds confidence for first responders that a victim is still alive; either conscious and moving or unconscious and breathing.



Features

- Designed for the harshest environments: tough, weatherproof Pelican case
- Rugged tablet: meets military specifications for the toughest rescue conditions
- Extended battery life
- Uninterrupted wireless data collection: Rescue Radar™ continues to operate if Wi-Fi is interrupted and seamlessly reconnects to the control tablet when connectivity is restored with no data loss
- Adjustable depth of display to adapt to site conditions
- All in one package: the system operates in a transport case with no additional setup required
- No custom software required for operation: control the system and view results through a browser on the tablet
- Fast geotagged results offload onto USB or via Wi-Fi
- Low maintenance: always ready for deployment

Rescue Radar™ comply with the Industry Canada (IC), United States Federal Communications Commission (FCC), and European Technical Standards Institute (ETSI) Regulations for ultra-wide bandwidth (UWB) devices.

Product Specifications

Dimensions & Weight
Size: 530 x 325 x 325 mm Weight: 7.9 kg (no battery) 11 kg (with battery and tablet)
Center Frequency
500 MHz
Power
1.25 A @ 12V Battery: Rechargeable sealed lead acid gel cell Life: 5 -8 hrs Capacity: 9Ah Charger: 110 -240 V for use all over the world
Environmental
Rescue Radar™ Electronics: -40 to +50°C Display Unit: -10 to +50°C
Maximum Detection Depth (Material Dependent)
Selectable 2, 4, 8, 10, 20, 30 meters
Maximum Control Wi-Fi Distance
75m
Tablet Operating System
Android

Applications

- **Urban Search & Rescue (USAR)**
- **Natural Disaster**
- **Terrorist Attack**
- **Mining disaster**
- **Structural Collapse**



Sensors & Software Inc.

1040 Stacey Court
Mississauga, ON
Canada L4W 2X8

p. +1 905 624 8909
+1 800 267 6013 (Toll free)